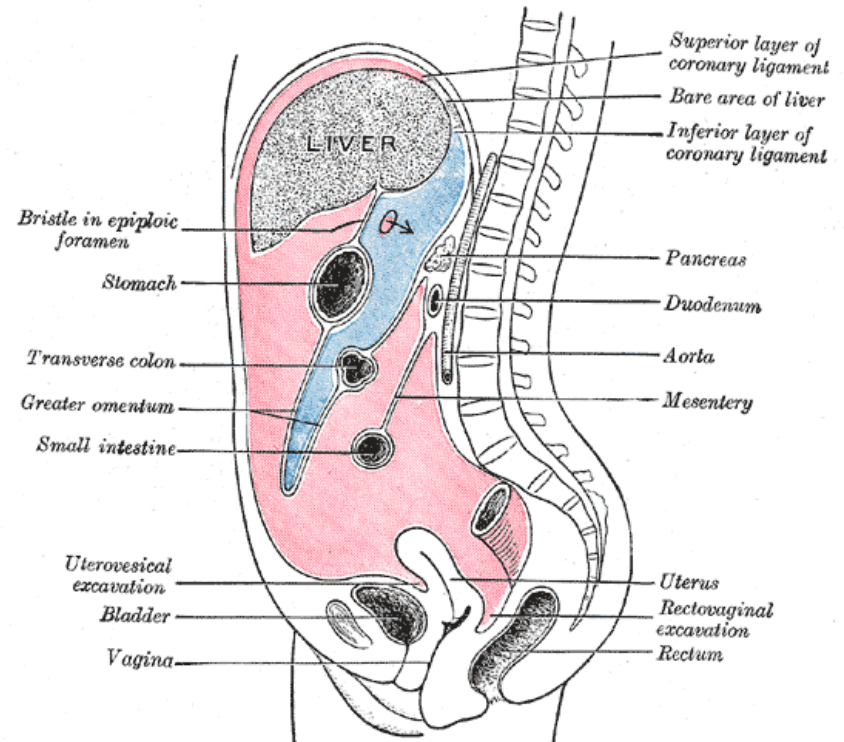


MESENTERY

Dr. A. Thamarai Selvi
Assistant Professor
Department of Anatomy
KIMS

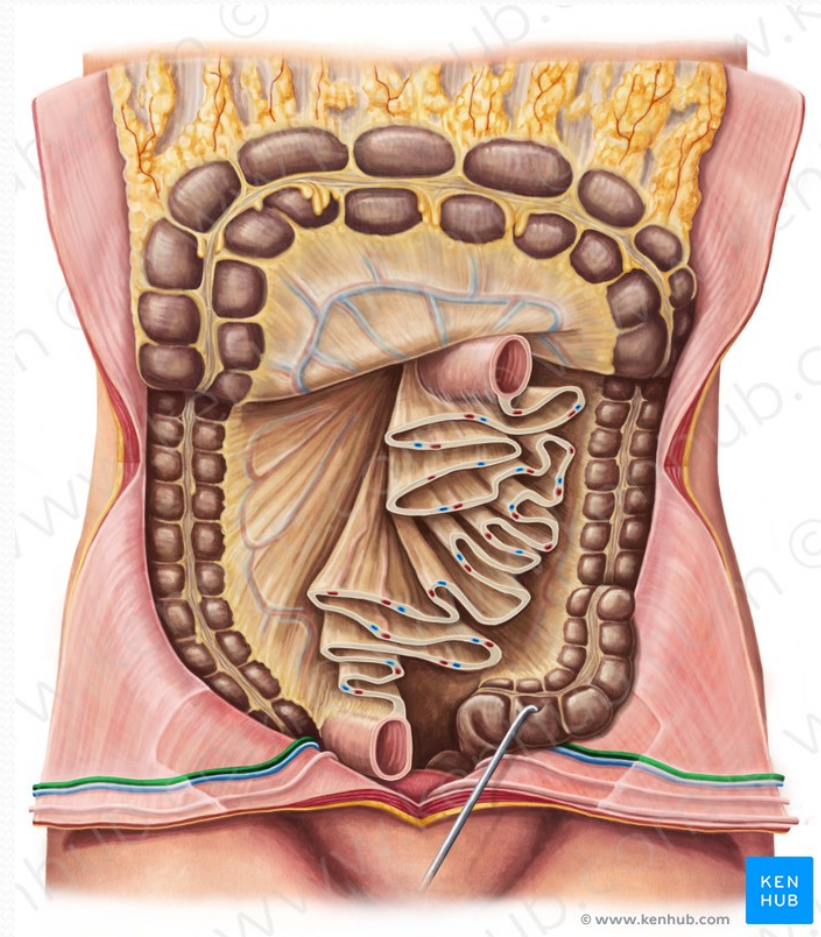
INTRODUCTION

- 2 layered Peritoneal fold
- Derived from Greater sac
- Suspends Jejunum and Ileum from posterior abdominal wall
- Provides nutrition and innervation to small gut
- Has 2 borders
 - Vertebral or Root
 - Intestinal or Free border



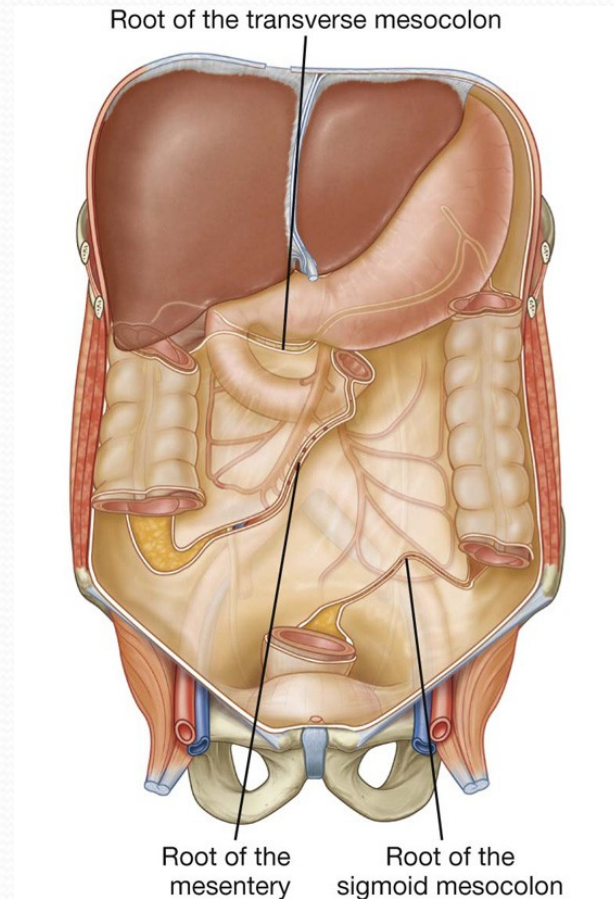
ROOT & FREE BORDER

- ROOT:
 - 15 cm (6") long
 - From left of L2 to the right Sacroiliac joint
- FREE BORDER:
 - 20 feet long
 - Encloses Jejunum and Ileum
- BREADTH OF MESENTRY: 15 cm (6")



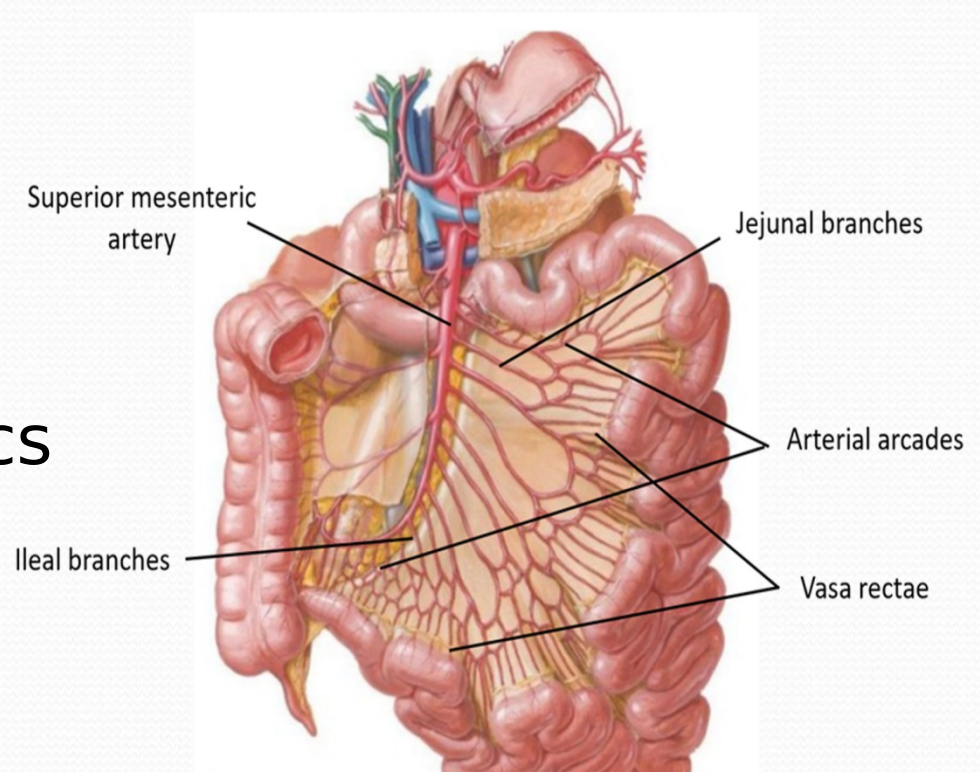
STRUCTURES CROSSED BY ROOT

- FROM SUPERIOR TO INFERIOR
 - 3rd part of Duodenum
 - Abdominal Aorta
 - Inferior Vena Cava
 - Right gonadal vessels
 - Right Ureter and Right Psoas major
 - Right genitofemoral nerve
 - Right Sacroiliac joint



CONTENTS

- Jejunum and Ileum
- Intestinal branches of Superior Mesenteric vessels
- Intestinal Lymphatics
- Nerve plexus
- Fat



A decorative header at the top of the page consisting of several overlapping, wavy bands of teal and light blue colors.

THANK YOU