

WHITE MATTER OF CEREBRUM- FIBRES

Dr. A. Thamarai Selvi
Assistant Professor
Department of Anatomy
KIMS

INTRODUCTION

- Cerebrum
 - Outer gray matter
 - Inner white matter
- Grey matter is composed of neuronal cell bodies
- White matter is composed of myelinated nerve fibres.

TYPES OF WHITE MATTER FIBRES

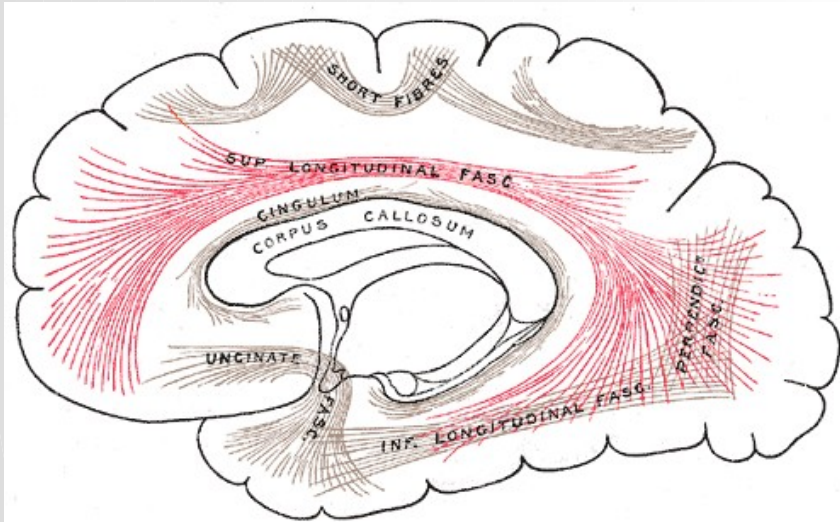
- **ASSOCIATION FIBRES**

- connects different parts of same hemisphere

- Short association fibres
- Long association fibres

- Examples of long association fibres are

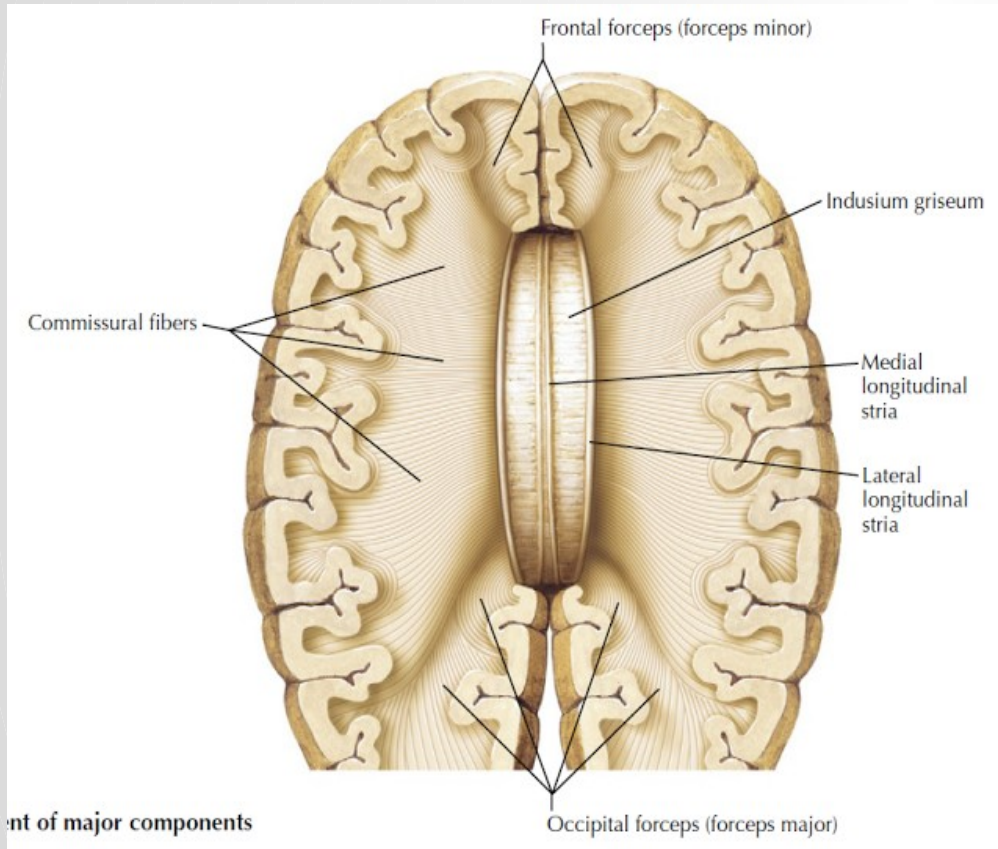
- Cingulum
- Uncinate fasciculus
- Superior and inferior longitudinal fasciculus
- Fronto- occipital fasciculus
- Perpendicular fasciculus



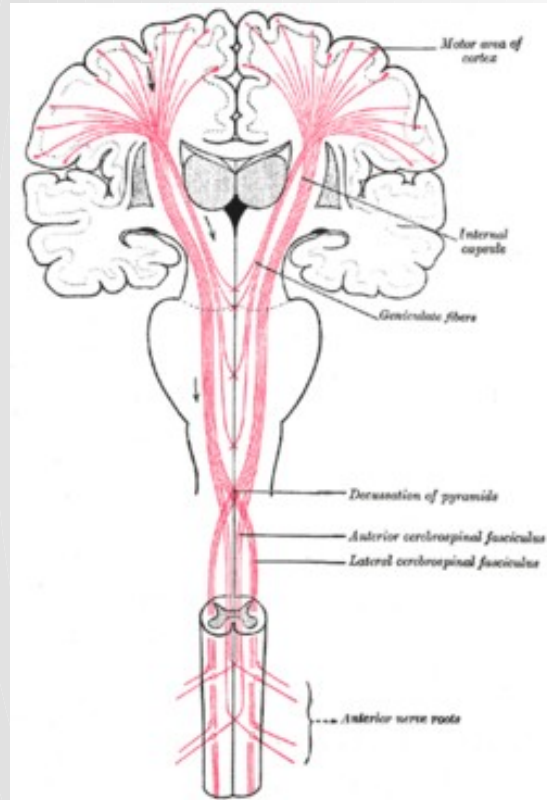
TYPES OF WHITE MATTER FIBRES

• **COMMISURAL FIBRES**

- Cross the midline and connect identical parts of two hemispheres
- Examples:
 - Corpus callosum
 - Anterior commissure
 - Posterior commissure
 - Habenular commissure
 - Hippocampal commissure



TYPES OF WHITE MATTER FIBRES



- **PROJECTION FIBRES:**
 - Connects the cerebral cortex to other regions of central nervous system by ascending or descending fibres.
 - Examples:
 - Corona radiata
 - Internal capsule
 - fornix



Thank You