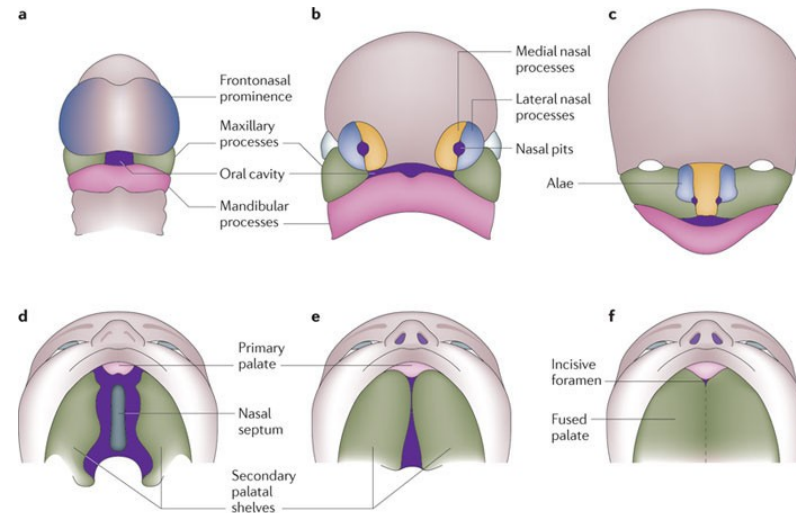


DEVELOPMENT OF PALATE

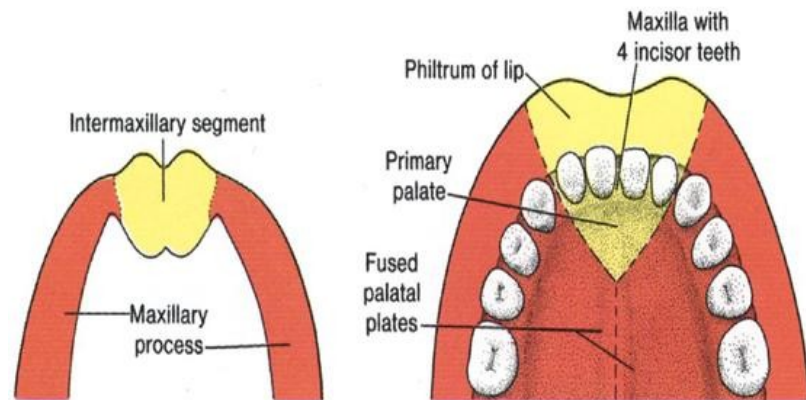
Dr. A. Thamarai Selvi
Assistant Professor
Department of Anatomy
KIMS

DEVELOPMENT OF PALATE

- The definitive palate is formed by
 - Primitive Palate- from Frontonasal process
 - 2 Palatal processes - from Maxillary processes
- By 6th week of intrauterine life, palatal process arise from maxillary process



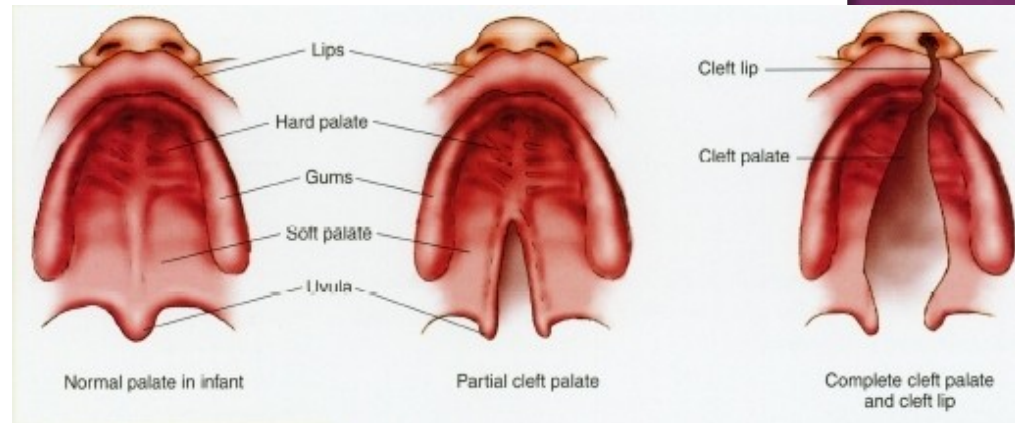
- Definitive palate is formed by fusion of
 - Each palatal process fuse with primitive palate
 - Both palatal process fuse with each other
 - The medial edge of palatal process fuses with nasal septum.

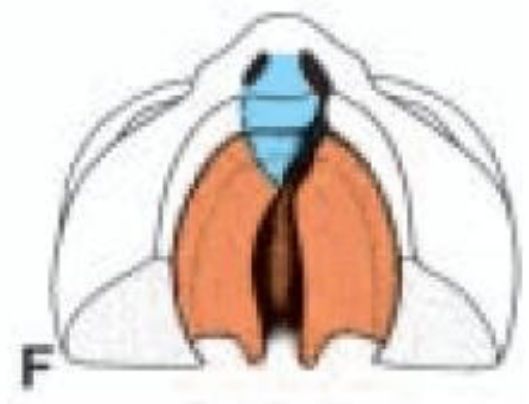
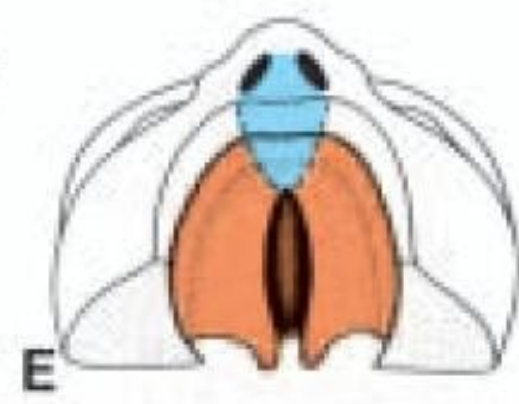
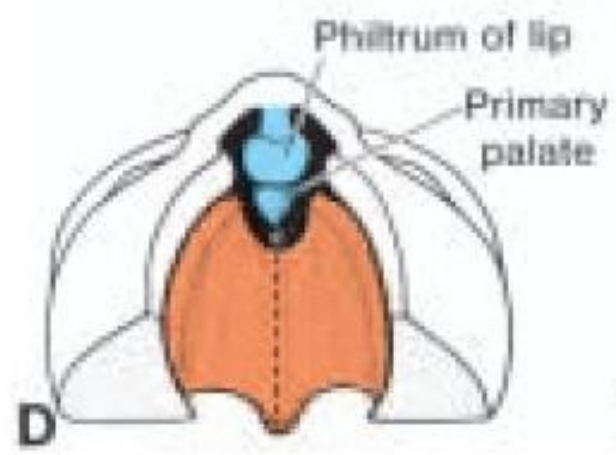
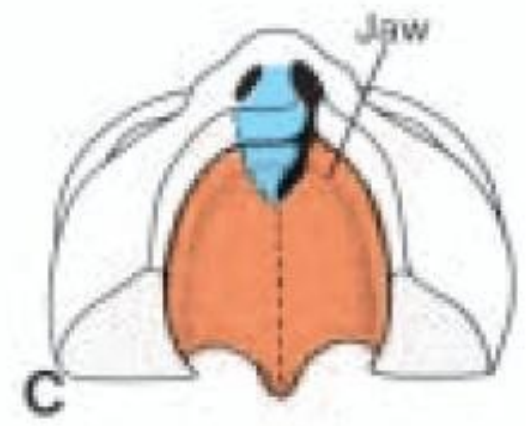
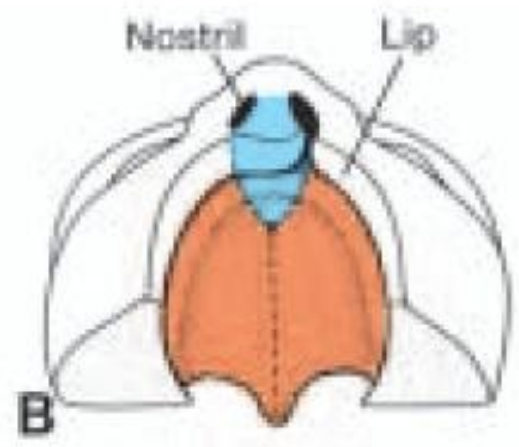
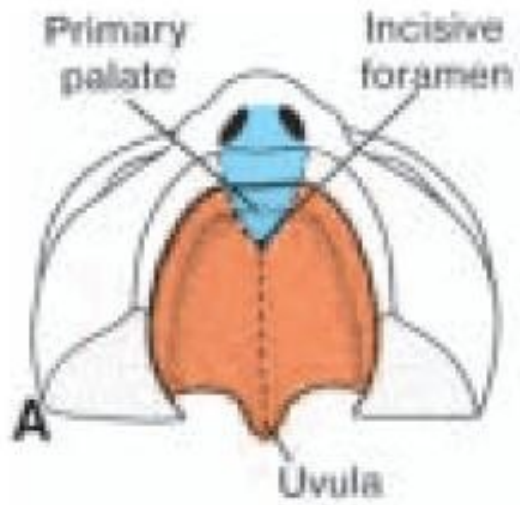


- **Premaxilla**
 - Part derived from frontonasal process
 - Upper Incisors are present here.
- **Palate**
 - Hard - intramembranous ossification of mesoderm
 - Soft- ossification do not extend posteriorly

CLEFT PALATE AND CLEFT LIP

- Defective fusion of the components leads to cleft palate.
- Various degrees of cleft palate are attributed.
- Defective fusion extending further anteriorly leads to CLEFT LIP or HARE LIP.
- Anomalous communication between mouth and nose is manifested.





THANK YOU